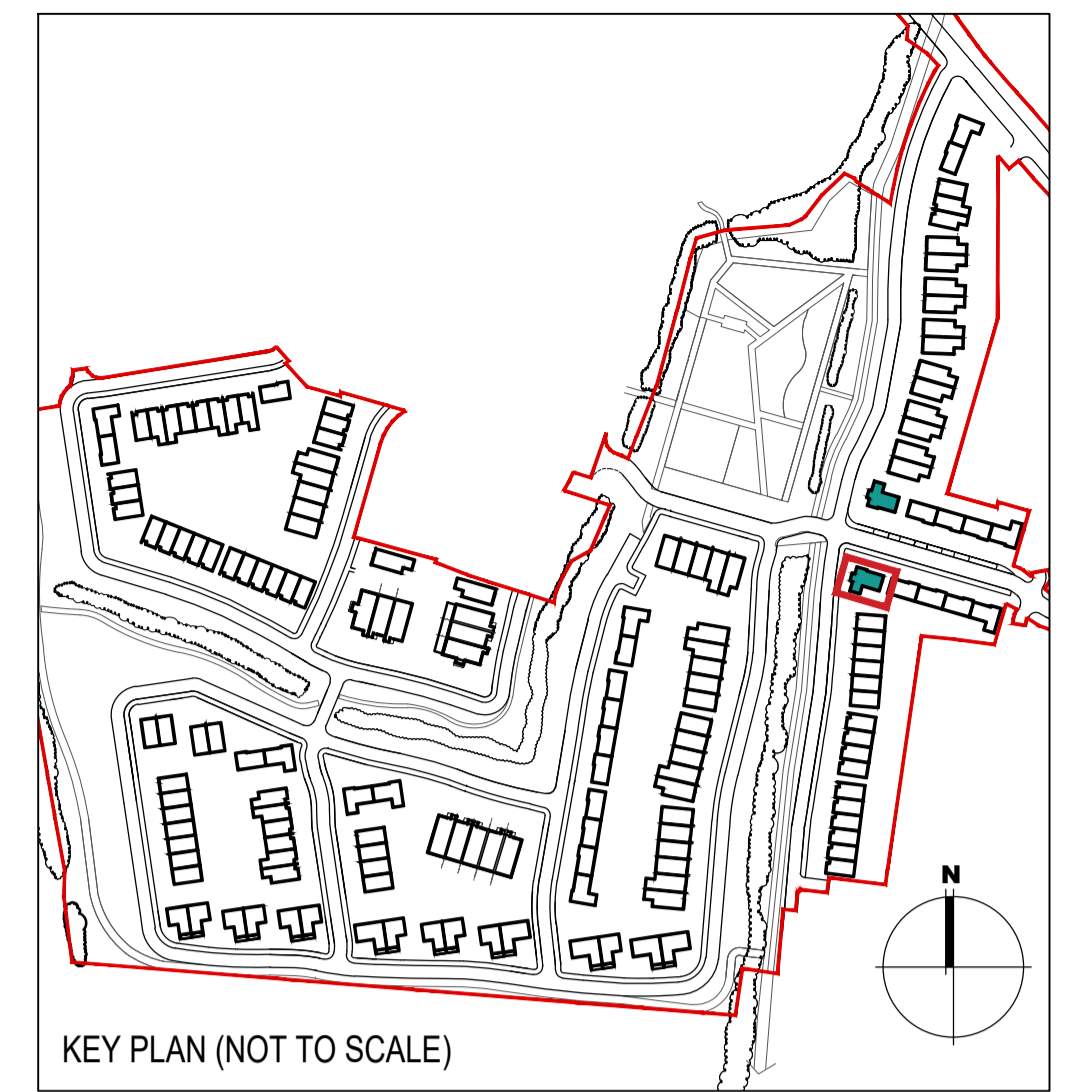


HOUSE TYPE D2
 Ground floor area 71.9m²
 First floor area 70.1m²
 Total Floor Area (3-bed unit): 142.0m²



EXTERNAL FINISHES

WALLS: PAINTED SAND / CEMENT RENDER OR PROPRIETARY PRECOLOURED RENDER FINISH
 SELECTED BRICKWORK WHERE INDICATED ON DRAWINGS

WINDOWS: SELECTED PROPRIETARY DOUBLE / TRIPLE GLAZED WINDOW SYSTEM WITH FRAMES TO APPROVED COLOUR
 OBSCURED GLAZING TO BATHROOMS AND EN-SUITES.

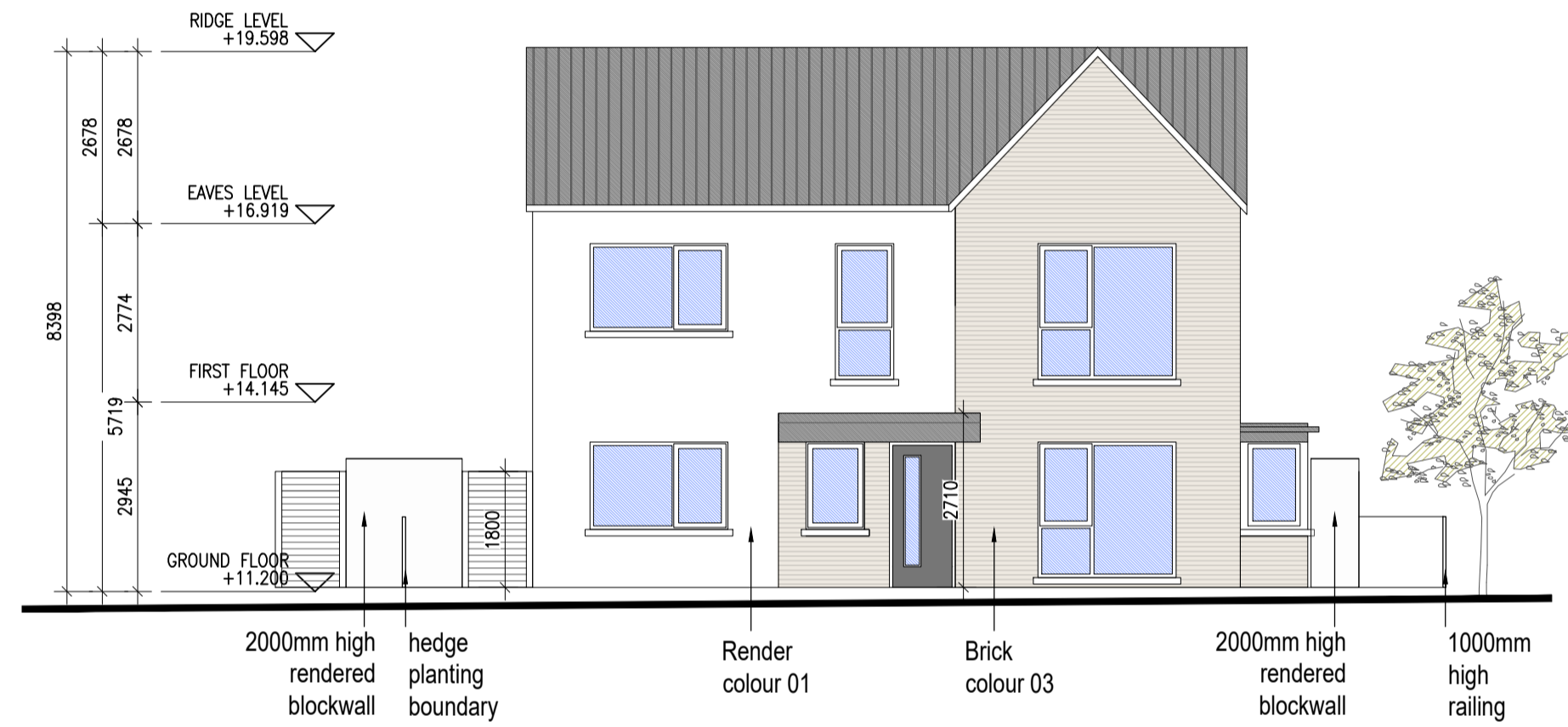
DOORS: SELECTED PROPRIETARY DOORS AND GLAZED SIDE SCREENS TO APPROVED COLOUR.

RAINWATER GOODS: uPVC OR POWDER COATED METAL GUTTERS AND RAINWATER PIPES TO SELECTED COLOUR.

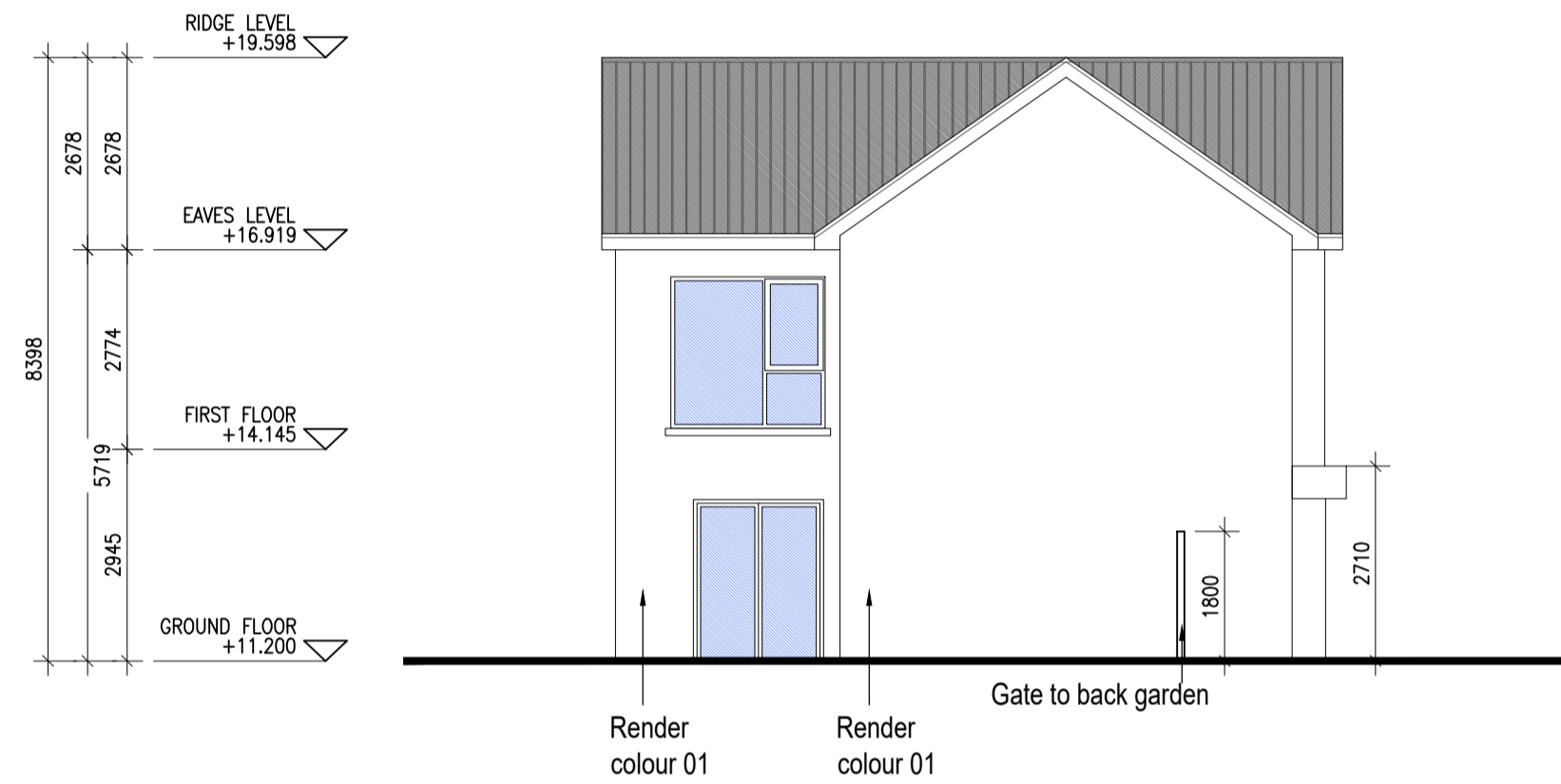
MAIN ROOF: CONCRETE ROOF TILES IN SELECTED COLOUR.

LOW LEVEL PROJECTION: ZINC CANOPY ROOF TO REAR OF UNITS

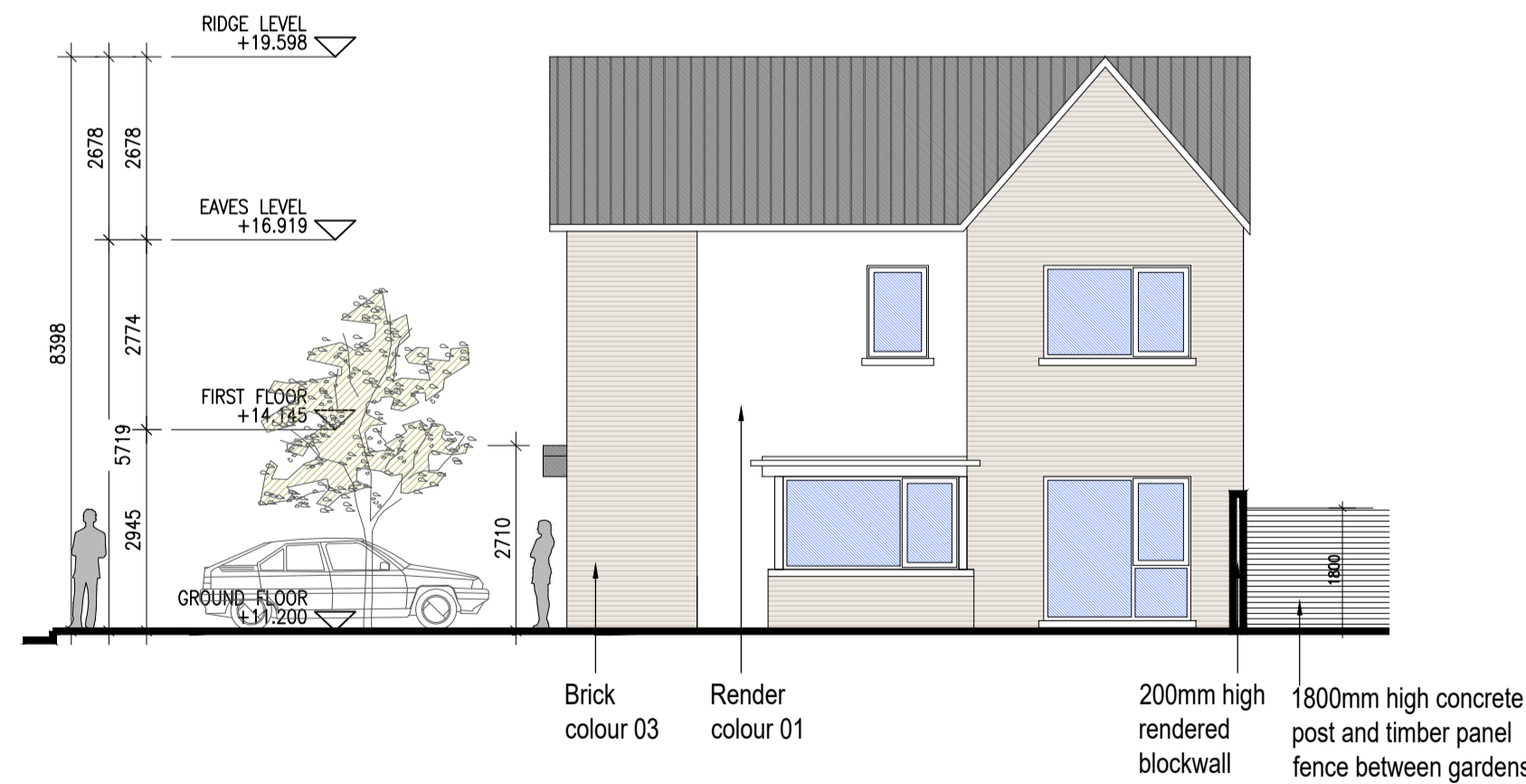
OTHER ITEMS: uPVC OR POWDER COATED METAL FASCIAS, SOFFITS AND BARGE BOARDS
 PAINTED MILDSTEEL RAILINGS AND BALUSTRADES



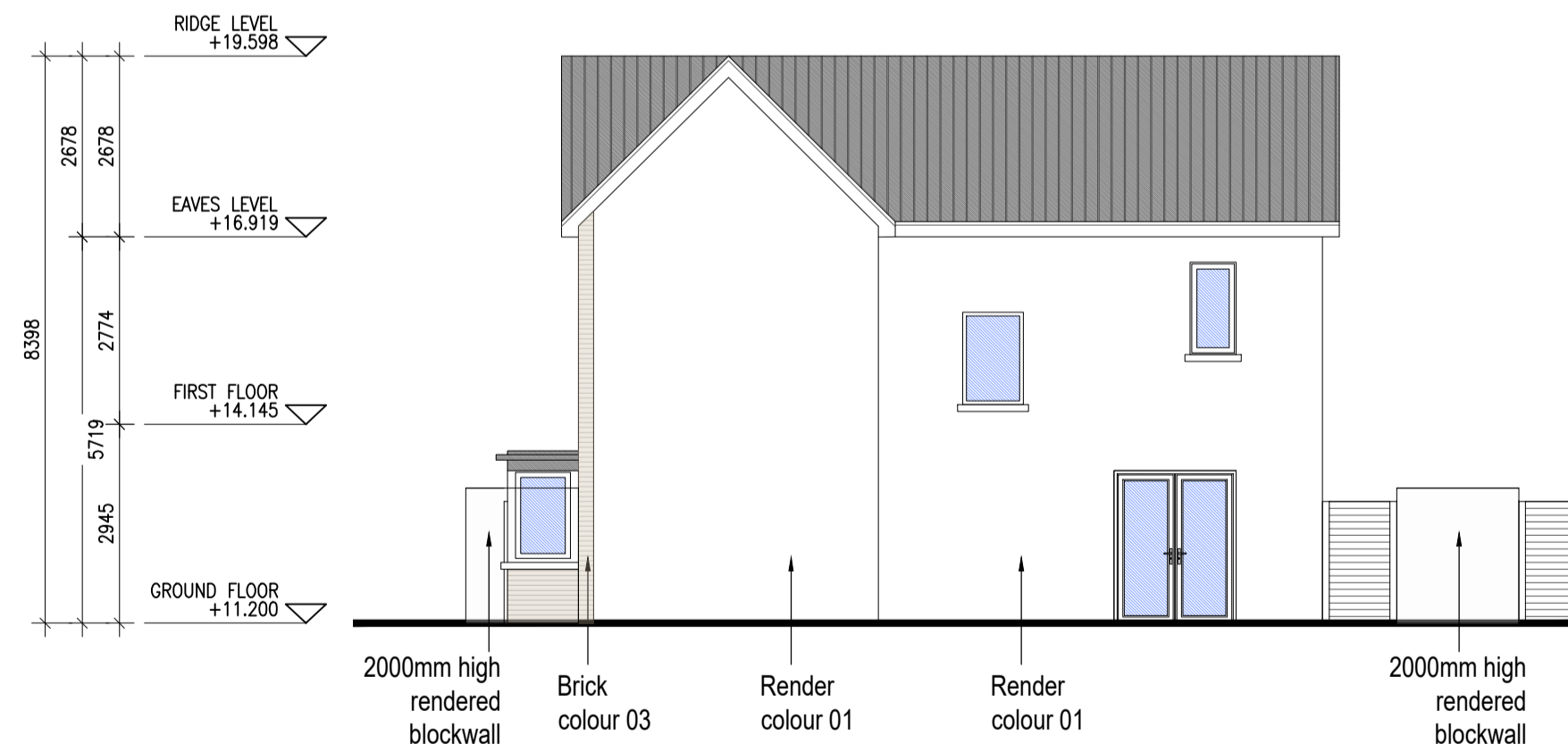
TYPE D2
 01 Type D2 - Front Elevation
 1:100@A1 3 BED HOUSE



TYPE D2
 03 Type D2 - Side Elevation
 1:100@A1 3 BED HOUSE



TYPE D2
 02 Type D2 - Side Elevation
 1:100@A1 3 BED HOUSE



TYPE D2
 04 Type D2 - Rear Elevation
 1:100@A1 3 BED HOUSE

HOUSES TYPES				Numbers of units
Type A1/A2/A3	3 bed [2st.]	108.6 sqm	32	
Type A4/A5/A6	3 bed [2st.]	117.6 sqm	11	
Type B1/B2/B3	3 bed [2st.]	110.6 sqm	22	
Type C1	3 bed [2st.]	118 sqm	9	
Type C2	3 bed [2st.]	117.4 sqm	8	
Type C3	3 bed [2st.]	118.6 sqm	1	
Type D1	4 bed [2st.]	141 sqm	9	
Type D2	4 bed [2st.]	142 sqm	2	
Type F1	4 bed [2st.]	134.4 sqm	11	
Type F2	4 bed [2st.]	135.6 sqm	5	
Type F3	4 bed [2st.]	146.5 sqm	2	
Type F4	4 bed [2st.]	146.4 sqm	5	
Type F5	4 bed [2st.]	147.8 sqm	17	
Type G	3 bed [1.5st.]	114 sqm	11	
Type H	4 bed [1.5st.]	147 sqm	5	
DUPLICES				
Type J1/J2	2 bed Apart. [1st.]	78.5 sqm	9	
Type K1/K2	3bed Duplex [2st.]	114.4 sqm	9	
Type J3	2 bed Apart. [1st.]	83.5 sqm	2	
Type K3	3bed Duplex [2st.]	114.4 sqm	2	
Total Residential Units				172

REFER TO LANDSCAPE ARCHITECT'S DRAWINGS FOR ALL LANDSCAPING DETAILS INCLUDING BOUNDARY TREATMENTS

HOUSE TYPE D2

Notes	Issue Status	No.	Date	Revision	Initials
1. Copyright Reserved	Progress	01	26.11.2021	SHD PLANNING APPLICATION TO ABP	RT
2. Work to agreed dimensions only. Do not scale drawing	Planning Application				
3. The contractor is responsible for checking all levels and dimensions on site and shall refer all discrepancies to the Architect	Fire Cert				
4. Where appropriate, for details of r.c. structure, or mechanical and electrical details, see Engineers drawings	Disability Cert				
5. Proprietary items shall be fixed in strict accordance with manufacturers instructions.	Render				
6. Sizes of proprietary items shall be checked with manufacturer.	Construction				
7. The contractor shall be responsible for the coordination of structure, finishes and services.	As Built				
Standard: 6158B-P-073-Type D2 - Elevations.dwg, 26/11/2021 10:36:41	Information Only				

Project	Portmarnock South Phase 1D Quintain Developments Ireland Limited
Drawing Title	House Type D2 - Elevations
Drawing No	6158B-P-073
Scale	1:100@A1
Rev	01
Drawn	RT
Date	26.11.2021

6-7 HARICOURT TERRACE, DUBLIN 2, IRELAND
 t: +353-1-6782400 f: +353-1-6787395
 www.bkd.ie
bkd architects
 BURKE-KENNEDY DOYLE